

BUILDING 7610

-Total common elements = 330 sf.
(Includes area of demising partition walls)

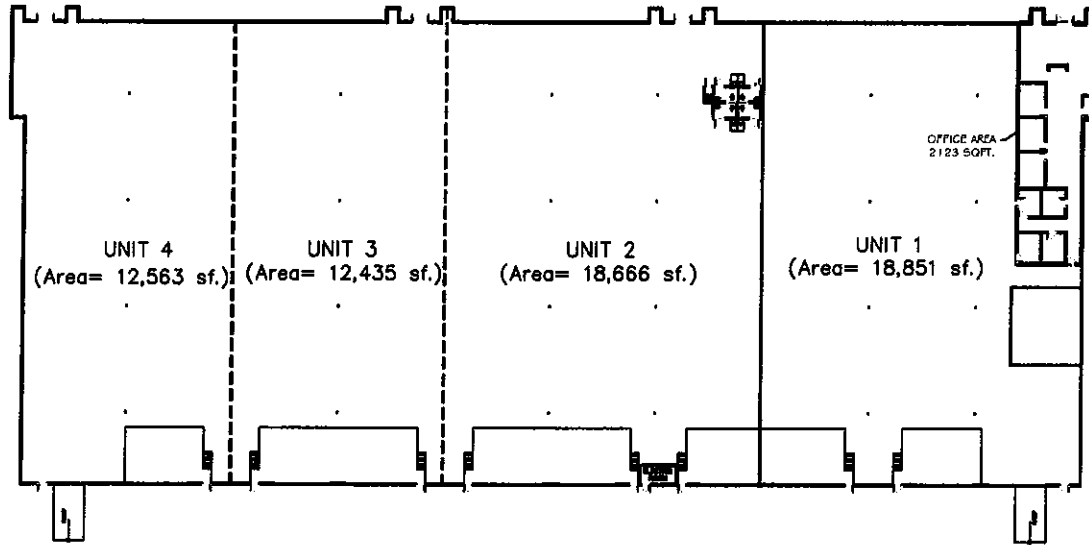
-Total sellable area = 62,515 sf.
(Includes only the interior area of units)

-% Common elements assigned to each unit. = $\frac{\text{Area of common elements}}{\text{Sellable area}}$

$$= \frac{330 \text{ sf}}{62,515 \text{ sf}} = 0.527 \%$$

Disclaimer:

- ① Tolerances of ± 1 sq. ft. per unit are expected.



GENERAL FLOOR PLAN (BUILDING 7610)

SCALE: 1/4" = 1'-0"

LEGEND

- PARTITION WALL
(4" PARTITION WALL PLUS 2 - 5/8" DRYWALL)
- DOOR
- WINDOW
- 8" MASONRY WALL
- UNOCCUPIED AREA.

NOTES:

- ① Area measurements were made from interior side of imaginary demising wall to interior side of other imaginary demising wall. For end space, area measurements were made from interior side of imaginary demising wall to interior side of masonry wall.
- ② For accurate information of each unit, see isolated unit layout.

REVISIONS:

CONSULTANTS:

Solner Structural Partnership, Inc.
7610 NW 25th St. Ft. Lauderdale, FL 33312
Phone: (954) 561-3541 Fax: (954) 561-3447
Miami, Florida 33122 E-Mail: admin@solner.com

DESIGN - INSPECTION - INVESTIGATION - REPORTS

job name: **MIAMI AIRPORT CENTER**
7610 NW 25 ST
MIAMI, FL 33122

title: **GENERAL FLOOR PLAN BUILDING 7610**

date _____

issued _____

drawn _____

checked D.K.S.

project no. _____

revisions:

sheet no.

GENERAL PLAN

Denis K. Solano
P.E. 56902
S.I. 2046