

BUILDING 7500

-Total area of common elements = 21,659 sf.
(Includes but not limited to hallways, service corridor,
public restrooms, false facade area and area of
demising partition walls.)

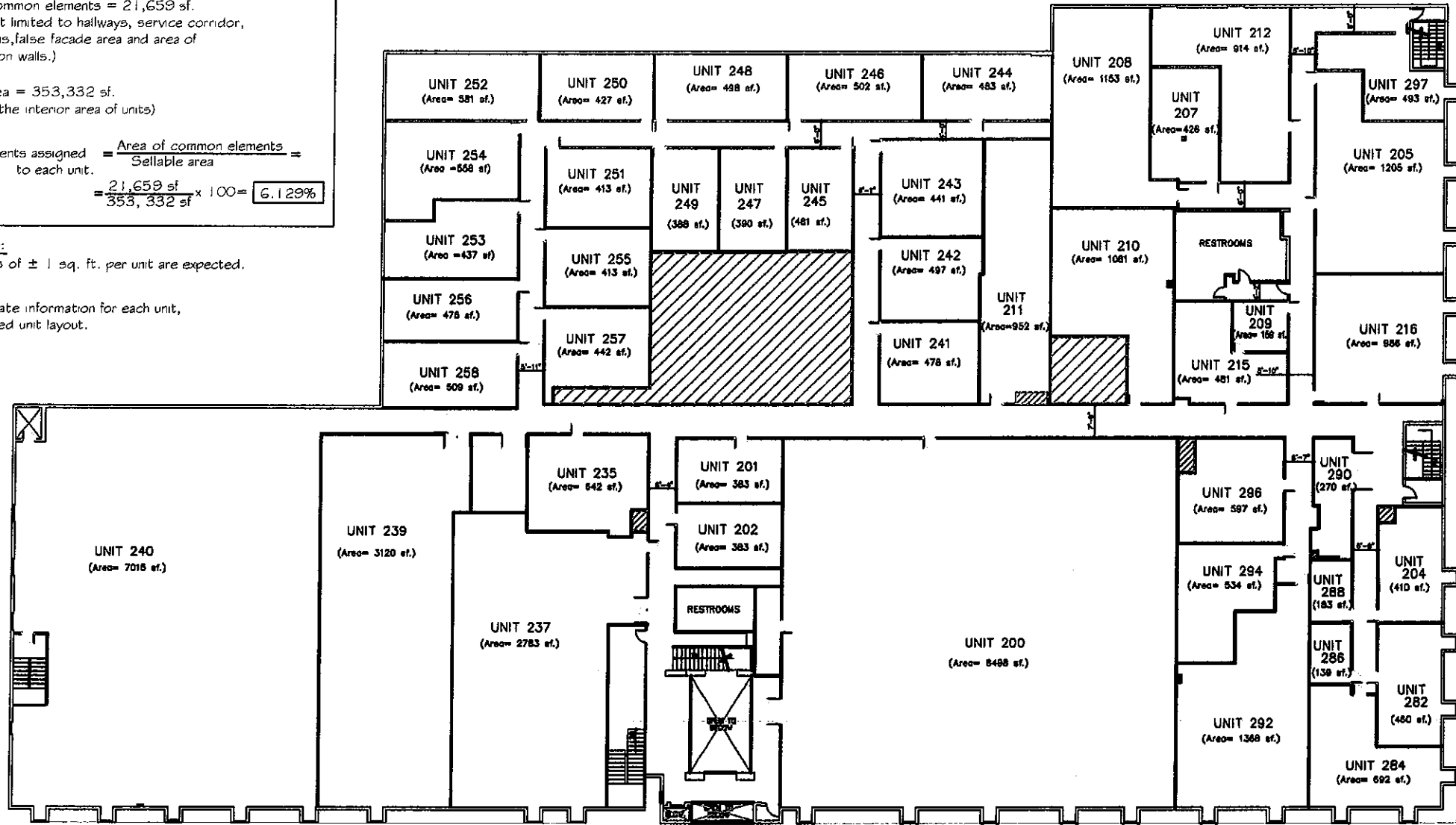
-Total sellable area = 353,332 sf.
(Includes only the interior area of units)

-% Common elements assigned to each unit.

$$\frac{\text{Area of common elements}}{\text{Sellable area}} \times 100 = \frac{21,659 \text{ sf}}{353,332 \text{ sf}} \times 100 = 6.129\%$$

Disclaimer:
 ① Tolerances of ± 1 sq. ft. per unit are expected.

Note: For accurate information for each unit,
see isolated unit layout.



SECOND FLOOR PLAN (BUILDING 7500)

SCALE: 1/8"=1'-0"

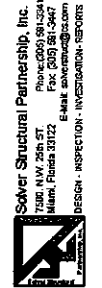
LEGEND

- PARTITION WALL (4" PARTITION WALL PLUS 2 - 5/8" DRYWALL)
- | DOOR
- WINDOW
- 6" MASONRY WALL
- ▨ UNOCCUPIED AREA

Denis K. Solano
 P.E. 56902
 S.1 2046

revisions:

CONSULTANTS:



job name: MIAMI AIRPORT CENTER
 7500 NW 25 ST
 MIAMI, FL 33122
 title: GENERAL PLAN SECOND FLOOR
 BUILDING 7500

date: _____
 issued: _____
 drawn: _____
 checked: D.K.S.
 project no.: _____
 revisions: _____

sheet no.

GENERAL PLAN